



SPRING 2006
Siskiyou Project
www.siskiyou.org



Inside:

- **Kalmiopsis Roadless at Risk**
- **BLM Targets Illinois Valley**
- **New Grants Pass Office**

From Director Chip Dennerlein ...

When I wrote you last fall, I had just started as Director of the Siskiyou Project. With snow still gleaming on the ridges, it's hard to believe that spring is already here and that the last few months have gone by so quickly. The hillsides are now bursting forth with the glorious diversity of flowering plants for which the Siskiyou Wild Rivers area is world renowned.

In January, we held a board/staff retreat and recommitted ourselves to defending the Siskiyou and to our campaign for long term, permanent protection of the Siskiyou Wild Rivers region as a National Conservation Area.

We also decided to open an office in Grants Pass, in order to engage more effectively with agencies, the gateway communities, and new allies. New efforts in southern Oregon will be matched by another year of Rolf Skar's campaign work in our Portland office, and we'll keep our active presence in Takilma/Cave Junction.

A year-end effort to contact current and lapsed members resulted in a terrific response. We renewed hundreds of members, and many former members re-joined at higher levels of support.

We're thrilled to have all of you on the team, because we have our work cut out for us.

As you thumb through these pages, I think you'll be struck by the challenges we face:

- BLM has launched a process to revise land management plans for all of western Oregon. The WOPR (an appropriate acronym) is already skewed toward reduced environmental protections and increased logging of low elevation, old-growth forests that are critical habitat for key species.
- BLM is also proposing five logging sales in the Illinois River Valley.
- In Congress, Rep. Walden is promoting

legislation to push logging after nearly every type of natural disturbance - even wind and rainstorms - with no protection for sensitive areas.

- The Forest Service now threatens to log the two largest roadless areas in Oregon as part of the Biscuit project. This precedent setting action could affect forests across the nation.

Ironically, these threats come as a mounting tide of scientific research is confirming that post-fire logging does not help forest renewal. Natural regeneration produces a more diverse, fire-resistant, and healthier forest than clearcutting and artificial replanting.

I wish I could take you all on a hike in the Babyfoot Lake Botanical Area. There is an abundance of flowers, shrubs, and conifer seedlings (as well as the coveys of grouse I flushed), which contrasts sharply with the starkness of adjacent areas that were logged and "treated" by the Forest Service after the burn. We can't take you all there in person, but through increased use of photo documentation, we can show everyone why logging these roadless areas would be a travesty.

We have a busy season ahead. The odds are tough, and the stakes are high, but the Siskiyou's wild mountains are still remarkably intact and diverse. The region's wild rivers are filled with salmon instead of dams.

Spring reminds us once more of the value of this natural legacy. With your continued support, we will protect it and pass it on.



Lee's Lewisia

Voice of the Wild Siskiyou

is the official newsletter of the
Siskiyou Project

Takilma office: 9335 Takilma Road
Cave Junction, Oregon 97523.
ph: (541)592-4459 fax: (541)592-2653

Grants Pass office: 213 SE H. St.
Grants Pass, OR 97526
(541) 476-6648 fax: (541) 476-7629

Portland office: 917 SW Oak St. Suite 407,
Portland, OR 97205. (503) 222-6101
rolf@siskiyou.org
project@siskiyou.org www.siskiyou.org

Mission Statement

For future generations of all species, Siskiyou Project is the grassroots network dedicated to permanently protecting the globally outstanding Klamath-Siskiyou region. The Siskiyou Project combines science, education and advocacy to build an inspired and effective national constituency for this special place.

This newsletter is printed on recycled paper by
Valley Web in Medford, Oregon.
Cover photos by John Erwin.

Siskiyou Project Board

David Johns, president
Darlene Southworth, vice president
Romain Cooper, secretary
Laurel Samson, treasurer
Jim Gurley
Dave Willis
Richard York

Siskiyou Project Staff

Chip Dennerlein, director
Barbara Ullian, senior policy analyst
Rolf Skar, campaign director
Rich Nawa, staff ecologist
Lisa Rohde, conservation coordinator
Kindi Fahrnkopf, financial manager
Justin Rohde, online outreach
Marjorie Reynolds, mail & data processor
Julie Norman, development director

Special thanks to our volunteers

Bill Gray, Kerry Whitehead, Dave Toler,
Orville Camp, Otter, Mary Birmingham,
Patrick Dodd, Amber Dodd, Wyldwood,
Linda Cooper, Dick Yeaw, Guenter
Ambron, Beast, Trace Harding, Caryn
Jacobson, Matt Dussek, Arin Wiley, Greg
Walter, Cathy Seitz, Jim Terrill, Luann,
Lane Cosner, TA Allen, Christi Dunn,
Carol McBride, Judy Hoyle, Chef Marilyn
Moore and her culinary arts class, Eric
Cerecedes, Carrie Zoll.

The Siskiyou Project is a proud
member of Earth Share of Oregon.
Earth Share is a federation of
America's leading non-profit envi-
ronmental and conservation organizations.



Nature as "Disaster".. Logging Bills Cut into Forest Life Cycle

Congressman Greg Walden (R-OR) has been the top recipient of timber industry cash in the US House of Representatives in the 2000, 2002, 2004 and 2006 election campaigns. Since his first campaign in 1998, he has received more than \$350,000 from the logging industry - and now he is proving why.

Walden is pushing a bill (HR 4200) that guts environmental safeguards and public oversight of costly logging projects after natural disturbances. Claiming they are "disasters," Walden's bill states that "any fire, flood, or explosion... hurricane, tornado, windstorm, snow or ice storm, rain storm, high water, wind-driven water, tidal wave, earthquake, volcanic eruption, landslide, mudslide, drought, or insect or disease outbreak" is a reason to wipe away environmental rules and open the door wide for taxpayer-subsidized logging on our National Forests. Senator Gordon Smith (R-OR), who was the number one target of timber industry cash in all of Congress when he last ran for re-election in 2002, has introduced similar legislation in the Senate (S. 2079).

Simply put, fire and other natural disturbances are the engines that keep the cycle of life turning in our forests. They are as natural and as important to our forests as rain or sunshine itself. After disturbances there is plenty of restoration work to do - but science clearly shows that industrial logging is not restoration. In fact, a recent peer-reviewed study from Oregon State University (OSU) published in the prestigious journal *Science* showed that logging in the Biscuit fire area harmed forest regeneration and increased fire risk.

Upset by the findings, OSU College of Forestry faculty with ties to the timber industry tried to stall publication of the study, and the Bush Administration suspended funding for the research. Thanks to public outcry, funding was restored and the actions of OSU College of Forestry faculty were rebuked (see page 6).

Still, Walden's costly logging bill is moving forward. It recently survived a committee vote and could be voted on by the full House of Representatives soon.

Please call your Representative today and urge them to oppose H.R. 4200, the Walden logging bill. Likewise, give your Senators a ring and tell them to oppose S. 2079, Gordon Smith's logging bill.

Congressional
switchboard: (202)
224-3121 (ask for
your members of
Congress).

To find your mem-
bers of Congress, go
to: www.congress.org.

*Source: Center for
Responsive Politics.
www.opensecrets.org



Post-fire logging like this in an old-growth reserve near Babyfoot Lake would be fast-tracked if the Walden logging bill becomes law. Photo by Rolf Skar

Logging Targets Oregon's Largest Unprotected Roadless Areas

The Bush administration recently announced plans to log the largest unprotected roadless forest in Oregon. Part of the controversial Biscuit logging project, the Forest Service is pushing this destructive proposal, despite the fact that roadless wildlands are supposed to be shielded from logging while state Governors and the Bush administration negotiate state specific roadless conservation policies.

This is a dramatic contradiction, and one that could have disastrous effects on some of the most important roadless wildlands in the nation.

Roadless forests targeted by the new logging sales, called "Mike's Gulch" and "Blackberry," could begin falling this summer. Your help is needed to stop this logging before it starts!

Mikes Gulch (South Kalmiopsis Roadless Area)

At about 12 million board feet, the Mikes Gulch sale is directly above the National Wild & Scenic Illinois River, and about a mile and a quarter above the river itself.

Blackberry (North Kalmiopsis Roadless Area)

At about 13 million board feet, the Blackberry sale is in the Indigo Creek Key Watershed. Indigo Creek is a tributary of the National Wild & Scenic Illinois River and a major contributor to wild salmon and steelhead populations of the lower National Wild & Scenic Rogue River's world class fishery.

The North & South Kalmiopsis Roadless Areas combined are about 190,000 acres in size with

approximately 175,000 acres contiguous (sharing a common boundary) with the Kalmiopsis Wilderness (179,000 acres). They are the largest Roadless Areas along the Pacific Coast from the Olympics to Baja and contain some of the most valuable salmon and steelhead habitat in the United States. Three spectacular National Wild and Scenic Rivers and five eligible Wild and Scenic Rivers flow through this big rugged landscape.

The Roadless Area Conservation Rule was finalized in early 2001 after years of study, 600 local public hearings and over 2.5 million comments in favor of the rule. The rule protected 58.5 million acres nationwide from logging and road building.

On May 5, 2005 the Bush administration repealed the 2001 Roadless Rule, eliminating all protections offered by the 2001 rule, reverting management of these areas back to existing forest plans. The Mike's Gulch and Blackberry timber sales would be the first of their kind, implementing the new Bush rule that reopens these special, roadless forests to unfettered logging.

South Kalmiopsis Roadless Area & Mikes Gulch Timber Sale



Copyright Barbara Ullian

What You Can Do To Help

Call Forest Service Chief Dale Bosworth and tell him to:

1. Immediately withdraw all roadless logging proposals in the Siskiyou National Forest including the Mike's Gulch and Blackberry logging sales.
2. Stop breaking your promise! Restore a moratorium on roadless area logging while state specific rules are developed.

Forest Service Chief Bosworth, USDA Forest Service 1400 Independence Ave., SW, Washington, DC 20250-0003 Phone: 202/205-1661; Fax: 202/205-1765; Email: dbosworth@fs.fed.us

Please also contact Oregon Governor Ted Kulongoski, Senator Ron Wyden and Representative Peter DeFazio, and: 1. Thank them for speaking up on behalf of roadless areas; 2. Ask that they continue to pressure the Bush Administration and demand the full protection of roadless forests in Oregon.

Senator Ron Wyden Federal Courthouse
310 West 6th St, Room 118
Medford, OR 97501
(541) 858-5122

Representative Peter DeFazio
612 S.E Jackson Street, Room 9
Roseburg, OR 97470
(541) 440-3523

Governor Kulongoski
160 State Capitol 900 Court Street
Salem, Oregon 97301-4047
(503) 378.4582.

Illinois Valley Opposes BLM Old-growth Logging

by Lisa Rohde

The Bureau of Land Management (BLM) is planning six controversial logging projects in the Illinois River Valley. The BLM logging sales are South Deer, West Fork, Deer Creek Salvage, East Illinois, Tennessee Lime, and Althouse-Sucker. The proposed project areas, covering more than 28,000 acres, will include timber sales, fuels thinning, and some restoration. However, logging these areas would irreversibly damage spotted owl habitat and some of Oregon's last low-elevation old-growth forests.

Illinois Valley residents have appeared by the hundreds at meetings and BLM Open Houses regarding these controversial logging projects. At four different meetings, as many as 200 people registered their opposition to further old-growth logging. Testimony pointed out that the forests are part of the Illinois River Valley's geographic identity. People

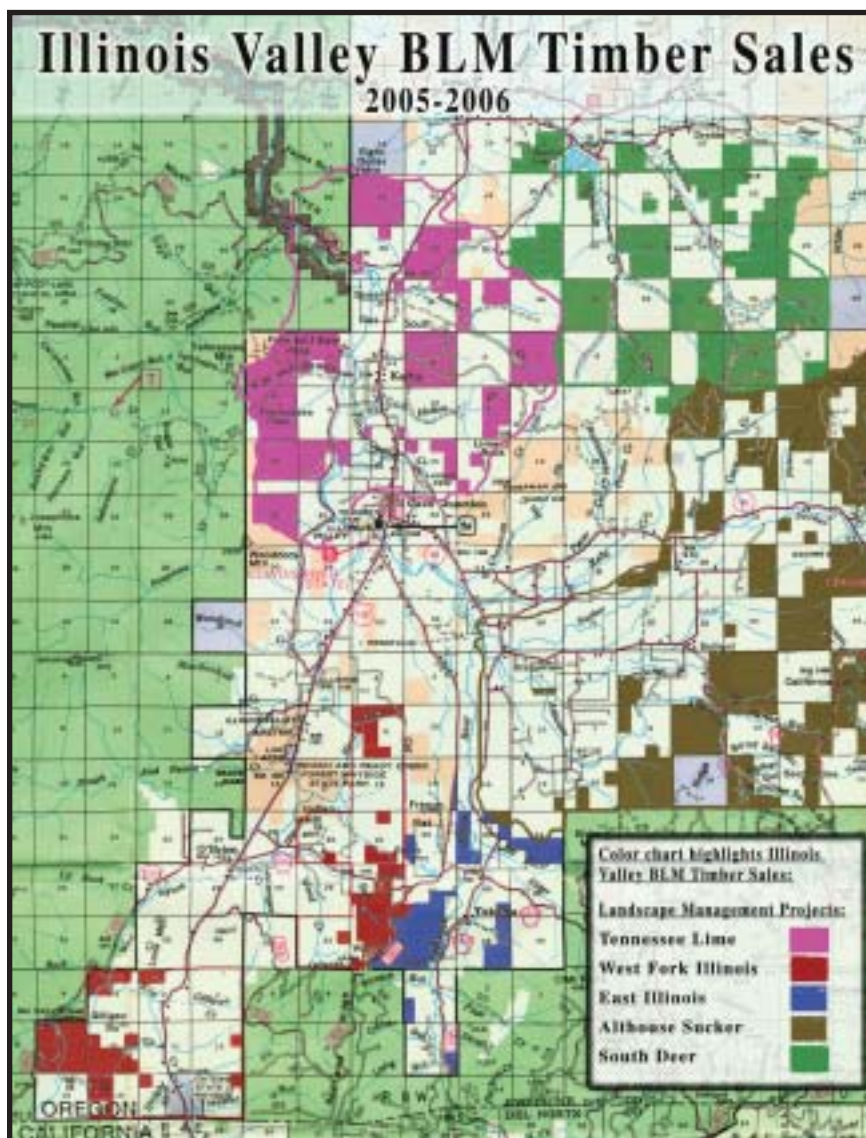
spoke to a spectrum of values from recreation, to spirituality and wildlife habitat. It's clear that people want the forest character of their valley to remain.

Siskiyou Project supports forestry projects focused on real fire safety (i.e. around communities) and forest restoration (i.e. improving diversity on previously "managed" stands). Such projects may appropriately include harvest and utilization of thinned trees. But this is not the focus of BLM's current plans. More than half of the volume already sold in the South Deer and West Fork Illinois timber sales will come from live trees over 21 inches in diameter. The most fire resistant trees are being targeted for logging, and this will only increase fire danger. The forest canopy will be reduced to 60% or less, thus destroying habitat for spotted owls and other rare forest wildlife.

These unlogged patches of older, larger trees on low elevation public lands are the last of their kind.

This forest type once existed throughout the valley, but has been greatly reduced by private land logging. The BLM plans target the Illinois River Valley's last remaining native forests and trees from the Deer Creek Fire.

BLM's record of public comments on the East Illinois and Althouse-Sucker logging proposals obtained through a Freedom of Information Act (FOIA) request - showed that not a single person explicitly supported the projects. In general, people's comments were opposed to logging old-growth and un-entered forests, with many people saying they do not support the projects at all.



Trees marked at the East Illinois sale illustrate BLM's intentions. Photo by Justin Rohde

Low-elevation Sales

You Can Help ! Please Take Action Now - Write BLM. Separate letters for each logging project are the most effective.

- 1) Deer Creek Fire Salvage Environmental Analysis (EA) comments are due April 19th.
- 2) Tennessee Lime needs early scoping comments now. The EA is expected mid-April in which there will be a final 30-day comment period.
- 3) East Fork Illinois needs early scoping comments now. The EA is expected mid-April in which there will be a final 30-day comment period.
- 4) Althouse Sucker needs early scoping comments now.

Please **send comments to Abbie Jossie**, Medford District BLM, 2164 NE Spaulding Ave., Grants Pass, OR 97526 or by email at or110mb@or.blm.gov.



At recent BLM public meetings there has been overwhelming opposition to logging sales. In Takilma, residents got the chance to speak directly to the BLM with their concerns.

Victory: Survey & Manage Protocols reinstated.

Several years ago, BLM decided they did not have to follow a formal process - known as Survey and Manage - that requires agencies to carefully inventory timber sale areas for key species and develop specific plans to protect these species before sales take place. Wrong again.

A recent court decision by Judge Pechman reinstated protection for animals that depend on old-growth forests. Surveys must cover all survey and manage species including great gray owls, salamanders, red tree voles, mollusks, plants, fungi, lichens and bryophytes. Known red tree vole nests must be protected with a minimum of 10-acre buffers. Red tree voles in the Illinois River Valley are helping to reduce the overall acreage and board feet that BLM is able to consider.



49% of the volume of the South Deer Timber Sale would come from mature and old growth trees according to BLM's Environmental Assessment. Photo by Justin Rohde

MEDFORD BLM SUMMIT

As part of our proactive outreach, Siskiyou Project will co-sponsor a "BLM Summit" to focus attention on the Western Oregon Plan Revision project, timber sale proposals, and alternatives to the Medford District's current approach that can create a sustainable future for forests in context of changing values and economies. Join us if you can.

Beyond Big Timber: The Future of BLM Forests in Western Oregon

Saturday May 20, 9 am - 4 pm
Main 1 Center for Arts,
821 N. Riverside - Medford OR

As the Bureau of Land Management prepares to remove environmental protections from nearly 2.5 million acres of public land, scientists, business owners, restoration foresters and community members will discuss the ecological, economic and social importance of BLM land.

Various field trips, including one to the Illinois River Valley, will be offered May 21st.

Sponsored by Klamath-Siskiyou Wildlands Center, Siskiyou Project, Umpqua Watersheds, Friends of Deer Creek Valley, and Legacy Lands Project.

Siskiyou Project Opens Grants Pass Office

The community of Grants Pass sits along the Rogue River, just off the Interstate 5 travel corridor. There is a new combined Forest Service/BLM office in GP. If you drive south from Grants Pass, within 20 minutes, you will cross the Rogue and the Applegate Rivers and descend into the Illinois Valley. A bit further you will pass the turn-off to Eight Dollar Mountain and the Kalmiopsis Wilderness. Twenty-five minutes southwest of Grants Pass on I-5 is Medford, with the Rogue-Siskiyou National Forest headquarters and the Medford district BLM office. Another ten minutes, you can get to Ashland - where several important conservation groups have their offices.

It doesn't take rocket science to figure out that Grants Pass is the "gateway community" to the Siskiyou Wild Rivers region, and a central hub for outreach and work in southern Oregon. That is exactly why Siskiyou Project has opened our new Conservation Program office in the heart of downtown, at 213 SE H Street (just across 7th from the historic Rogue Theatre). The new office will significantly increase our ability to coordinate among staff, engage with agencies, outreach to communities, work with existing allies and develop new ones.

With our presence in Takilma, Grants Pass and Portland, Siskiyou Project is strategically positioned both to defend the Siskiyou, and to expand the proactive work needed to achieve our long term vision - the permanent protection of the Siskiyou Wild Rivers area as a National Conservation Area. Come by and see us whenever you get the chance.



Director Chip Dennerlein at 213 SE H. St.

Science, Post-Fire Logging, and the Theater of the Absurd

In Henrik Ibsen's classic play, "An Enemy of the People," the local doctor is vilified by his community after he discovers and reports that an outbreak of sickness is being caused by contamination in the spring waters upon which the town's health spa economy depends. This is not what politicians and business interests want to hear. They try to prevent release of the information, then alter it. When the honest man won't be silent, they attack him. An adaptation of this timeless and riveting play was recently performed at Oregon State University (OSU).

Graduate student Daniel Donato and several others were researching the effects of post-fire logging on regeneration after the Biscuit burn. They found that instead of speeding forest recovery, the logging had negative effects, at least in the years immediately following operations.

Limbs and waste wood left on the ground after large trees were harvested increased fire risk. Equipment use and "skidding" of felled trees compacted soils and crushed emerging vegetation. Mechanical burning to reduce slash killed new conifer seedlings and woody plants that provided groundcover. But in areas that were not logged, research found that even after a severe burn, the forest was naturally very resilient.

Density of new conifer seedlings greatly exceeded

predictions. Data showed post-fire logging actually reduced regeneration by as much as 71%.

Donato's initial peer-reviewed study was accepted for publication in the prestigious journal "Science." But like in "An Enemy of the People," the findings did not appeal to powers at OSU and BLM. In a shameless disregard for scientific process and academic freedom, faculty at OSU's timber-linked College of Forestry tried to block publication. BLM announced cancellation of funding needed to complete the research, claiming Donato violated the grant by using the data for political purposes. But the editor of "Science" pointed out that the magazine - not Donato - had added a statement noting that the study could influence debate over post-fire logging bills currently before Congress. (i.e. Rep. Walden's HR 4200). National press and widespread public outcry against censorship forced BLM to restore funding.

This dark comedy has brought something important to light. A substantial body of research clearly shows industrial logging does not benefit restoration. Donato, et al is only the most recent study to find that so-called "salvage" logging is no salvation for a burned forest. As noted forest scientist Dr. Jerry Franklin suggests, we should really think of post-fire logging as a "tax" against the forest's natural ability to regenerate.

Support the Siskiyou Project!

Illinois Valley Earth Day Celebration & Cleanup!

Saturday April 22nd at Forks State Park in Cave Junction.

Cleanup crew meets at Forks State Park at 8:50 am and picks up trash until noon.

Earth Day Celebration is from 1-4 pm.

Join more than a half billion people participating in over 174 countries around the world as we celebrate the earth and renew our commitment to building a safer, healthier and cleaner world for all of us. Earth Day is the only event celebrated simultaneously around the globe by people of all backgrounds, faiths and nationalities.

Expect plenty of family fun this April 22nd in Cave Junction's beautiful Forks State Park along the Illinois River. Bring your own picnic and pack out your own trash.

There will be music, speakers, kids activities, and informational tables from local groups. Contact justin@siskiyou.org for more information.

Join Siskiyou Project for an Earth Day clean up on the Rough and Ready Creek Watershed (USFS). Meet at 8:50 AM at Forks State Park, Cave Junction. Contact kindi@siskiyou.org for more information.

Automatic Transfer Monthly Giving Program

Please help us strengthen and deepen our efforts to protect the unique Siskiyou Wild Rivers region. Join our **Automatic Transfer Monthly Giving Program!** \$5 or more a month will significantly cut administrative costs. Your contribution can then be used on the ground, where it counts!

Authorization Form

I authorize my bank to transfer from my credit card or checking account the amount indicated below to the Siskiyou Regional Education Project.

I agree to make a monthly contribution of:
\$35 \$25 \$10 Other \$ _____
(\$5 minimum)

IMPORTANT: Please fill out the address form below, **enclose a check for your first month's contribution**, clip and send both forms.

Credit card users: Please provide credit card account information below as well.

Make checks and money orders payable to: Siskiyou Project 9335 Takilma Road, Cave Junction, OR 97523.

Please Join the Siskiyou Project!

- Yes, I want to join! Here's \$35 (or more).**
- I'm already a member! But here's \$_____ more to protect the Siskiyou.**

Please Send Me:

Choose one gift for \$35 or more

- 100 Hikes in Southern Oregon
- Lessons from the Ancient Forest, video by Lou Gold.
- Plants of Rough and Ready Creek, a four color poster by Paula Fong.
- Spirit of the Siskiyou's by Mary Paetzel.

Address info

Print Full name: _____

Mailing Address: _____

Email: _____

- Would you like to get weekly updates by email?

Credit Card info

Circle one: VISA Mastercard

Credit Card #: _____

Three Digit Code (#on back of card) _____

Expiration Date: _____

Help Aveda Help the Siskiyou!



Aveda salon staff members, like those at the FoxFire Salon & Spa in Fircrest Washington, are working hard to support the Siskiyou Project this April. Siskiyou Project's Campaign Director Rolf Skar (in back of photo) has been busy presenting to Aveda salons. Photo by Tricia Hernandez

Aveda, a world leader in sustainable beauty and personal care products, recognizes that botanical diversity is important for cosmetics, cancer cures and a healthy planet.

That is why Aveda is partnering with the Siskiyou Project during their annual Earth Month celebration to raise funds and awareness for endangered plants. If you visit an Aveda salon from the San Francisco bay area north to the Canadian border this April, you'll likely see a petition to protect the Endangered Species Act and opportunities to support the Siskiyou Project financially.

For example, 100% of the cost of the rose-geranium scented "Light the Way" candle will be donated to the Siskiyou Project in April. Stop into your local Aveda salon to find out about other fundraisers such as raffles, donated products and discounted services. You can buy a "Light the Way" candle online and learn more about Aveda Earth Month by visiting: www.aveda.com

The Siskiyou Project sends our appreciation to Aveda for its commitment and continued support.

Many thanks to our foundation supporters in 2005: Burning, Community, Dudley, Edna Wardlaw Trust, Lazar, Patagonia, Weeden, Wiancko, and Wilburforce.

Grand Opening -- New Grants Pass Office

213 SE H Street

June 2nd, 6 to 9 pm during first Friday Art Walk

Siskiyou Project
9335 Takilma Road
Cave Junction OR 97523

NONPROFIT ORG US POSTAGE PAID Cave Junction, OR PERMIT NO. 50

Spring 2006

*complimentary copy
please subscribe*